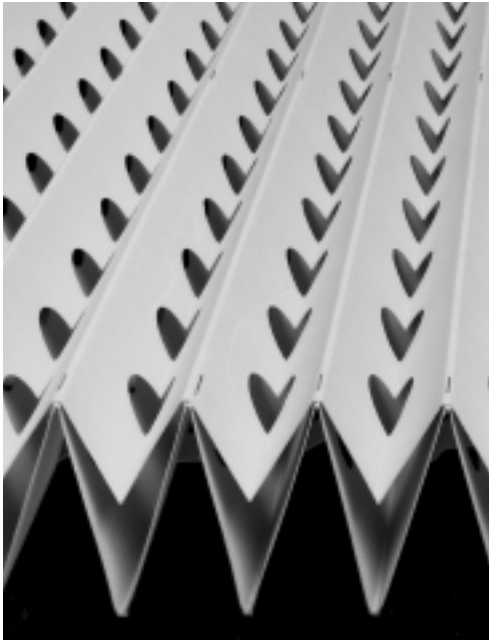


Booth Filters & Accessories

Binks AF Filter™

Improved Performance and Lower Operating Costs For Spray Booths



The Binks AF Filter delivers important benefits to spray booth operators applying most industrial coatings and adhesives. The accordion style, pleated construction captures overspray efficiently, lasts three to five times longer than ordinary dry filters, and contributes to an improved working environment.

Reduced Operating Costs

High overspray holding capacity provides longer intervals between filter changes.

- Fewer filters to dispose of means lower disposal cost
- Fewer filters to buy and inventory, reduces investment costs
- Less maintenance labor costs
- Fewer work interruptions boosts productivity

Pleated construction facilitates collapsing the filter for storage and disposal, minimizing handling costs. Nearly constant static pressure drop over the life of the filter produces nearly uniform booth ventilation.

- Increases paint mileage and lowers material costs
- Improves working environment
High filtering efficiency reduces work chamber, blower and stack maintenance.

User Friendly

- Built in expansion limiter insures proper performance
- Just two pieces required for most standard booths reduces installation time and cost
- White face reflects light to improve painter visibility

Compatibility with Coatings

- Low, medium and high solids solvent based thermoset
- Most low, medium and high solids solvent based air dry
- Low, medium and high solids water based thermoset and air dry
- All types of plural component coatings
- Most industrial adhesives
- Fiber-filled and bituminous materials
- Not recommended for use with coatings that may dry before reaching the filter

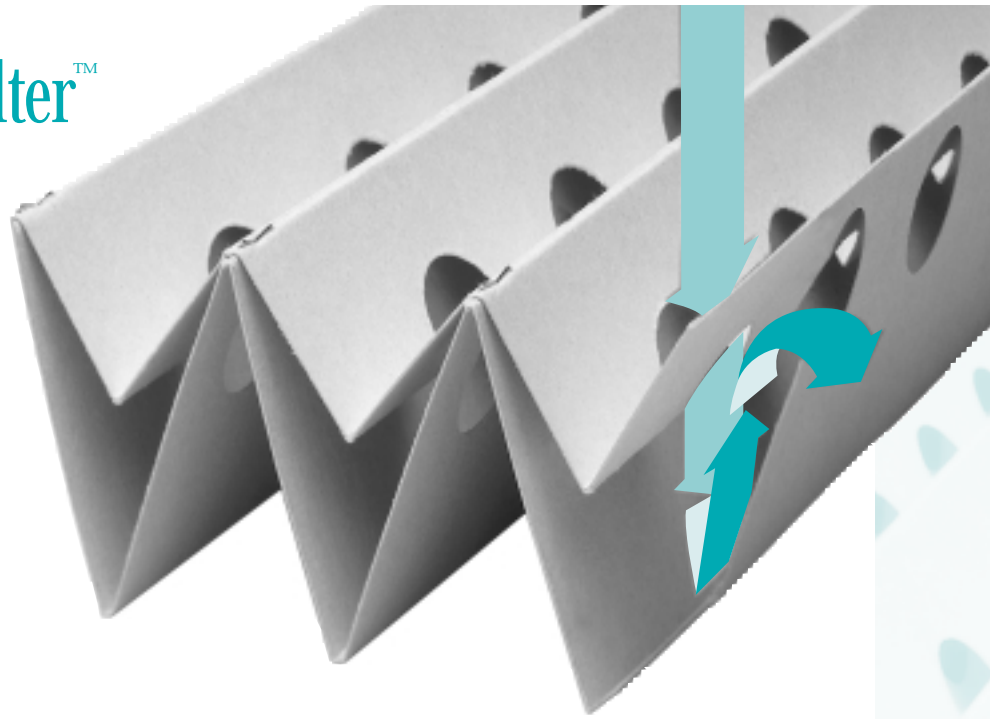
Environmentally Friendly

- Biodegradable and incineratable
- Collapsible to minimize disposal bulk and associated costs
- Manufactured from recycled paper

Binks AF Filter™

How It Works:

Binks AF Filter utilizes a combination of impingement and inertial separation to capture the overspray droplets suspended in the air stream passing through it. The larger droplets tend to impinge on and be retained by the front surface of the filter. The accelerating air stream carries the overwhelming majority of the mid-sized and smaller droplets through the network of circular holes distributed across the face of the filter. The forward momentum of the rapidly moving droplets separates them from the air stream which makes two quick, violent directional changes immediately after penetrating the front surface of the filter. The overspray droplets are driven into the deep interior "V" pockets formed by each filter pleat. In heavy spraying installations, slow drying and thermoset coatings may accumulate to the point they drain or run down the front face of the filter further extending the functional life of the AF filter.



Technical Data:

- Average Capturing Efficiency — 97.14% @ 150 FPM, w. high solids baking enamel. (Actual efficiency is a function of the coating being sprayed and the associated operating conditions)
- Recommended Average Air Velocity — 100 - 200 FPM
- Nominal Pressure Drop @ 150 FPM — 0.15 inch W.C.
- Maximum Pressure Drop — 1 inch W.C. with center support; 0.5 inch without
- Filter Size (Expanded): — 30 ft. x 3 ft. x 2.5 in (90 sq. ft. of effective surface area)
- Expansion — Limited by permanently attached straps to 8 pleats per foot

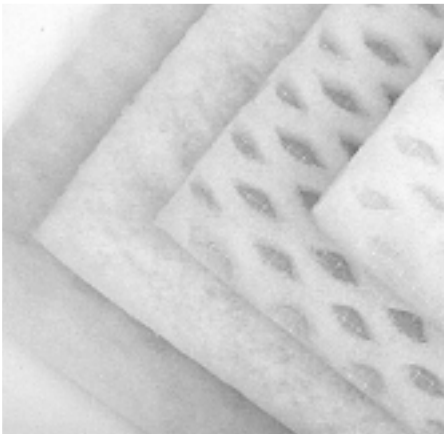
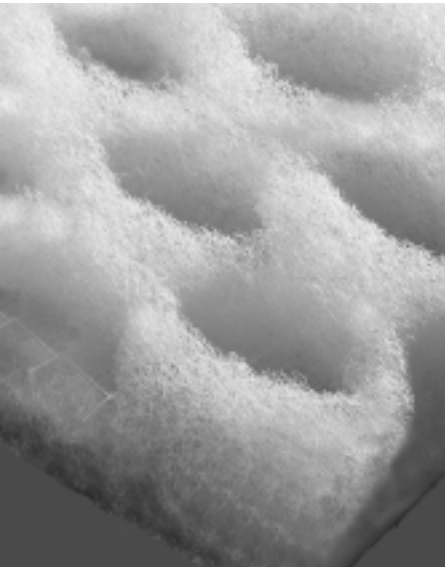


Independent test lab report

| PRODUCT NUMBER | BINKS AF FILTER DIMENSIONS | SHIPPING WEIGHT (POUNDS) |
|----------------|----------------------------|--------------------------|
| 29-356 | 3' x 30' 3 Pack only | 63 |

Spray Booth Over-Spray Filters

Paint Pockets – Standard White and Green



Paint Pockets provide industrial spray finishers with the greatest filter value possible. Unique, three-dimensional, expanded ply construction provides extremely high holding capacity along with 99.84% arrestance efficiency...the highest single stage filter rating available.

Reduced Operating Costs

Five times more overspray holding than many high efficiency filters.

- Less lost production time due to filter changes
- Fewer filters to dispose of — Less bulk — Less cost
- Fewer filters to inventory — Less investment
- Lower weekly maintenance cost

High efficiency means less downstream contamination. Less stack cleaning. Cuts particulate emissions. Reduces spontaneous ignition risk.

More consistent static pressure drop increases paint mileage, lowering paint costs.

User friendly

Polyester media facilitates quick filter changes.

- Media does not irritate workers
- Available in blankets and pads
- White face reflects light to improve painter visibility

Compatibility with Coatings

Ideal for virtually all spray applied industrial coatings.

- Low, medium and high solids, solvent based, thermosets
- Most low, medium and high solids, solvent based, air dry coatings
- Low, medium and high solids, water based, thermoset and air dry coatings
- Plural component coatings
- Rapid drying coatings
- Many UV and radiation cured coatings
- Most industrial adhesives
- Fiber filled resins and bituminous coatings

Environmentally Friendly

99.84% arrestance efficiency means virtually all overspray is captured.

- Particulate emissions substantially reduced
- Fully incineratable. Media produces no residual ash
- Filter medium may be land-filled
- Meets UL class 2 standards for flammability
- Exhaust airstream contains almost no overspray particulate

How It Works:

Paint Pockets expanded front ply provides 2.5 times more surface than conventional nonwoven synthetic and fiberglass arrestance media. This innovative 3-dimensional feature is the key to the filter's low initial pressure drop, relatively stable pressure drop over the filter's useful life and its high holding capacity. The filter's unique construction is covered by pending U.S. and international patents. Paint Pockets is offered in configurations compatible with most spray booth filter retaining systems.

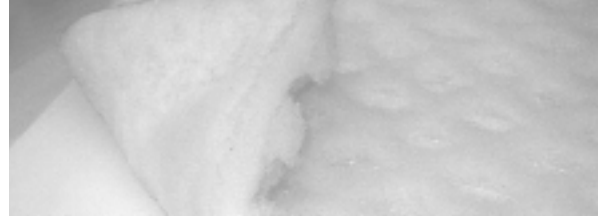
Spray Booth Over-Spray Filters

Paint Pockets – Standard White and Green

Paint Pockets – Standard White High Capacity

Technical Data:

- Average Arrestance Efficiency — 99.84% @150 FPM, w. high solids baking enamel
- Average Penetration — 0.16% under the above conditions*
- Typical Overspray Holding Capacity — 6 lbs./sq. ft **
- Recommended Average Air Velocity — 100 - 200 FPM
- Nominal Pressure Drop @ 150 FPM and with a clean filter — 0.08 inch W.C.
- Maximum Pressure Drop — 1 inch W.C. Recommend filter be changed when the pressure drop across it increases by 0.5 inch, or when excessive paint run-off, or when overspray rollback is experienced
- Filter construction — multipleplies of differing density high loft polyester fibers; includes a strong reinforcing grid of polypropylene fibers
- Flammability Rating — UL Class 2
- Typical Filter Depth — 1.75 to 2.25 Inches
- Mounting — Compatible with commonly used pad frames, spikes and compression retaining devices ***

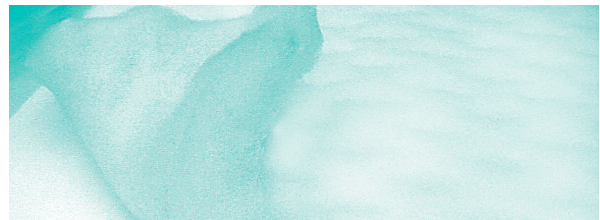


| PRODUCT NUMBER | WHITE HIGH CAPACITY DIMENSIONS | SHIPPING WEIGHT (POUNDS) |
|----------------|--------------------------------|--------------------------|
| 29-2371-30 | 20" x 20" Pads 30 Per Box | 13.5 |
| 29-2358-30 | 20" x 25" Pads 30 Per Box | 15.2 |
| 29-2525 | 24" x 50' Blanket | 10.6 |
| 29-2459 | 30" x 50' Blanket | 13.2 |
| 29-2446 | 36" x 50' Blanket | 15.7 |
| 29-2526 | 40" x 50' Blanket | 17.3 |
| 29-2447 | 45" x 50' Blanket | 19.4 |
| 29-2527 | 48" x 50' Blanket | 20.6 |
| 29-2457 | 60" x 50' Blanket | 25.7 |

Paint Pockets – Green Medium Capacity

Technical Data:

- Average Arrestance Efficiency — 99.43% @150 FPM, w. high solids baking enamel
- Average Penetration — 0.57% under the above conditions*
- Typical Overspray Holding Capacity — 6 lbs./sq. ft **
- Recommended Average Air Velocity — 100 - 200 FPM
- Nominal Pressure Drop @ 150 FPM and with a clean filter — 0.04 inch W.C.
- Maximum Pressure Drop — 1 inch W.C. Recommend filter be changed when the pressure drop across it increases by 0.5 inch, or when excessive paint run-off, or when overspray rollback is experienced
- Filter construction — multipleplies of differing density high loft polyester fibers; includes a strong reinforcing grid of polypropylene fibers
- Flammability Rating — UL Class 2
- Typical Filter Depth — 1.25 to 1.50 Inches
- Mounting — Compatible with commonly used pad frames, spikes and compression retaining devices ***



| PRODUCT NUMBER | GREEN MEDIUM CAPACITY DIMENSIONS | SHIPPING WEIGHT (POUNDS) |
|----------------|----------------------------------|--------------------------|
| 29-2528-40 | 20" x 20" Pads 40 Per Box | 13.5 |
| 29-2529-40 | 20" x 25" Pads 40 Per Box | 15.2 |
| 29-2530 | 30" x 60' Blanket | 12.3 |
| 29-2531 | 36" x 60' Blanket | 13.5 |
| 29-2532 | 48" x 60' Blanket | 19.0 |
| 29-2533 | 60" x 60' Blanket | 23.5 |

* Actual efficiency and penetration are a function of the coating being sprayed and all of the other associated operating conditions including proper installation. Penetration is a measure of the overspray that passes through the filter and which may contaminate downstream equipment.

** Actual holding capacity is a function of the coating being sprayed and the associated operating conditions. Finishers using blankets should exercise caution when taking down fully loaded blankets. A loaded 45" wide 8' long blanket's weight may approach 200 lbs.

*** Recommend adjacent blankets/rolls be installed with a minimum overlap 2" to prevent overspray bypass.

Spray Booth Products: Exhaust filters-Floor & Wall Coverings

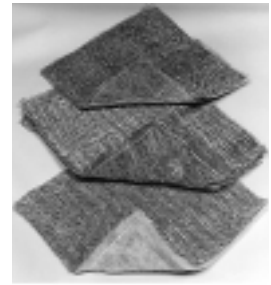
Protects Paint Spray Booth Floors and Walls from Overspray

Exhaust Filters

Value priced high performance paper for medium to high volume applications

- Slit and expanded paper designs
- Economically handles all overspray requirements
- Larger openings on intake side than exhaust side
- Depth loading for maximum service life
- Media does not irritate workers
- Quicker filter changes

| PRODUCT NUMBER | FILTER DIMENSIONS | NUMBER OF FILTERS PER CASE | SHIPPING WEIGHT (POUNDS) |
|----------------------------------|-------------------|----------------------------|--------------------------|
| 29-158 | 20" x 25" | 70 | 16 |
| 29-159 | 20" x 20" | 70 | 13 |
| CONSTRUCTION - 6 Layers of Paper | | | |



Floor & Wall Covering

"Binks Flame-a-Guard™" Flame Retardant Paper - Floor Covering

- White surface aids in spray booth illumination
- Allows fast, easy booth clean-up – no scraping, stripping, or scrubbing
- Virtually eliminates tracking of paint from spray booth to other plant areas
- Reduces fire hazard potential due to accumulation of paint overspray
- Maximum durability even where dollies, fork lifts, or other heavy equipment is utilized

| PRODUCT NUMBER | FLAME RETARDANT PAPER ROLL DIMENSIONS | SHIPPING WEIGHT (POUNDS) |
|----------------|---------------------------------------|--------------------------|
| 29-834 | 36" x 300' | 35 |
| 29-835 | 42" x 300' | 40 |
| 29-836 | 60" x 300' | 54 |
| 29-898 | 72" x 300' | 64 |
| 29-899 | 84" x 300' | 75 |



BoothCoat™ Peelable Coatings for Paint Spray Booth Walls

Peelable, non-flammable, white wall coating.

- Water based
- Easy on – sprays on in minutes
- Easy off – peels off in sheets
- Fast drying
- Reduces costly clean-ups and downtime
- Visibility enhancing bright white
- Excellent coverage per gallon
- For wet, dry, and powder booths

| BOOTH COAT PRODUCT NUMBER | BOOTH COAT PRODUCT DESCRIPTION | SHIPPING WEIGHT (POUNDS) |
|---------------------------|--------------------------------|--------------------------|
| 29-248 | 1 Gallon Cans: Dries Clear | 10 |
| 29-249 | Five Gallon Pails: Dries White | 55 |



Tight-Seal™ Intake Filter Panel

Top Grade Two-Ply Filter Panels to Trap and Securely Hold Dust in Place.

Tacky intake filter panels for mixing rooms and cross-draft and semi-downdraft spray booths.

- Two-ply panel, Nominal 1" thickness
- Tacky pressure sensitive adhesive
- Polyester media securely heat sealed around an internal wire grid
- Wire grid reinforced with two cross wire supports
- Four internal parallel heat-seals to eliminate filter fluttering
- Green air leaving side

| PRODUCT NUMBER | FILTER DESCRIPTION | FILTER DIMENSIONS | NUMBER OF FILTERS PER CASE | SHIPPING WEIGHT (POUNDS) |
|----------------|-------------------------|-------------------|----------------------------|--------------------------|
| 29-486 | Tight Seal Filter Panel | 20" x 20" x 1" | 20 per Case | 15 |



Millennium Series Respirators

Superior Protection against Organic Vapors, Fumes, Dusts, and Mists

Millennium 3000 – Premium Paint Spray Respirator

Breathe easier with the Binks Millennium 3000 – a premium charcoal filter respirator. Ready-to-use right out of the box, the Millennium 3000 combines superior comfort with the fit, durability, and protection of a conventional half-mask respirator. Designed with finishing professionals in mind, the Millennium 3000 features:

- Heavy duty silicone and metal face-piece for increased durability and comfort
- Adjustable, heavy duty straps and head band
- Maximum serviceability – fully serviceable with a Binks Tune-Up Kit
- Extended life – withstands repeated cleanings and exposure to paints and solvents without deterioration

Millennium 2000 – Classic Paint Spray Respirator

For economical protection against organic vapors, fumes, dusts, and mists, try the Binks Millennium 2000 – a value-priced charcoal respirator. Ready-to-use right out of the box, the Millennium 2000 provides the fit and comfort of a traditional respirator and protection from paints and solvents. The value-priced Millennium 2000 is a good choice when convenience and value are important considerations.

Both the Binks Millennium 3000 and Millennium 2000 Respirators meet 42 CFR Part 84 Standards.

Binks Tech Tip . . .

When should cartridges and filters be replaced? The service life of cartridges and filters depends on several factors including breathing rate/volume, concentration of contaminants, temperature, and humidity.

- Replace chemical cartridges when you detect odor or taste of vapors, or when you experience eye, nose, or throat irritation.
- Replace pre-filters or filters when you experience increased resistance to breathing.

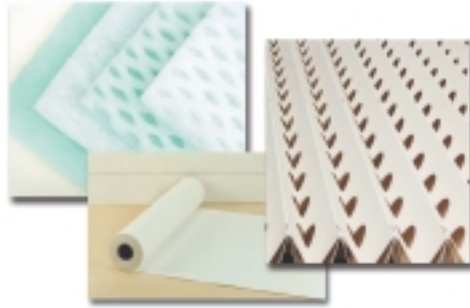
Warning! Binks Millennium paint spray respirators are not to be used with urethane paints or other paints containing di-isocyanates. Di-isocyanates have a low odor threshold and are not easily detectable by smell. A dangerous level of di-isocyanates can break through a charcoal filter cartridge before the user is able to smell it. Painters using such paints must use an air-supplied respirator.

| PRODUCT NO. | PRODUCT DESCRIPTION | CASE QUANTITY | INNER PACKS |
|---|--|---------------|---|
| Millennium 3000 Respirator Units | | | |
| 40-141 | Millennium 3000 – SMALL | 10 | 1 per Clam Shell |
| 40-128 | Millennium 3000 – MEDIUM | 10 | 1 per Clam Shell |
| 40-143 | Millennium 3000 – LARGE | 10 | 1 per Clam Shell |
| Millennium 3000 Replacement Cartridges & Pre-Filters | | | |
| 40-1921-10 | Filter Cartridge, Organic Vapor | 20 | 2 per Blister Card 10 Blister Cards per case |
| 40-1924-10 | Pre-Filter, Oil Resistant (Use with 40-1925 Covers) | 100 | 10 per Blister Card, 10 Blister Cards per case |
| Millennium 3000 Accessories | | | |
| 40-1925 | Filter Cartridge Covers (Use with 40-1924-10 Pre-Filters) | 20 | 2 per Blister Card, 10 Blister Cards per case |
| 40-1928 | Tune-Up Kit for Millennium 3000 Respirator Unit: (Contents: Cradle Headband, R&L Neckstraps, 2 Inhalation Valves, 2 Cartridge Gaskets, Exhalation Valve & Cover) | 10 | 1 per Poly Bag 10 Poly Bags per case |

| PRODUCT NO. | PRODUCT DESCRIPTION | CASE QUANTITY | INNER PACKS |
|---|---|---------------|---|
| Millennium 2000 Respirator Units | | | |
| 40-1929 | Millennium 2000 – SMALL | 10 | 1 per Clam Shell |
| 40-1930 | Millennium 2000 – MEDIUM | 10 | 1 per Clam Shell |
| 40-1931 | Millennium 2000 – LARGE | 10 | 1 per Clam Shell |
| Millennium 2000 Replacement Cartridges & Pre-Filters | | | |
| 40-1932-10 | Filter Cartridge, Organic Vapor | 20 | 2 per Blister Card 10 Blister Cards per case |
| 40-1935-10 | Pre-Filter, Oil Resistant (Use with 40-1936 Covers) | 100 | 10 per Blister Card, 10 Blister Cards per case |
| Millennium 2000 Accessories | | | |
| 40-1936 | Filter Cartridge Covers (Use with 40-1935-10 Pre-Filters) | 20 | 2 per Blister Card, 10 Blister Cards per case |
| 40-1939 | Tune-Up Kit for Millennium 2000 Respirator Unit: (Contents: Cradle Headband, Neckstraps, 2 Inhalation Valves, Exhalation Valve) | 10 | 1 per Poly Bag 10 Poly Bags per case |



Sales and Service
Through a Nationwide Network of Industrial Distributors



North American Office

ITW Industrial Finishing
Binks
195 Internationale Blvd.
Glendale Heights, IL 60139
630-237-5000
Fax 630-237-5011
www.binks.com

Customer Service
1-800-992-4657

Technical Support
1-888-992-4657

